



## Summary

Ever wonder how to populate the Production Procedure matrix on the Brew Sheet? Follow the instructions below and you will soon find out!

## Description

To Access the Production Procedure setup go to one of the following locations:

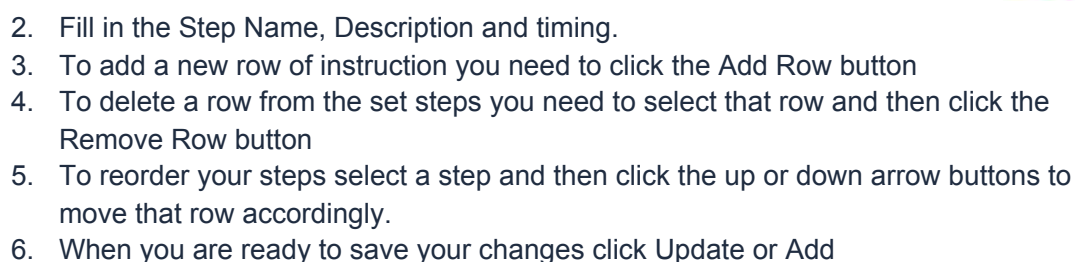
1. Production > Production Forms > Production Procedure
2. Open a Wort BOM and click the Production Procedure

The screenshot shows the 'Bill of Materials' window for Product No. W1003, Quantity 30, Warehouse F99. The BOM Type is set to Production. The 'Production Procedure' button is highlighted with a red box. The table below lists the components:

| # | Item No. | Item Description      | Quantity | UoM N... | Warehouse | Issue Method | Price List    | Unit Price | Total | Comments |
|---|----------|-----------------------|----------|----------|-----------|--------------|---------------|------------|-------|----------|
| 1 | RM5005   | Malt 2-Row Bulk       | 1,000    | lb       | A1        | Manual       | Price List 01 |            |       |          |
| 2 | RM5028   | Maris Otter supersack | 200      | lb       | A1        | Manual       | Price List 01 |            |       |          |
| 3 | RM5024   | Malt C-45             | 100      | lb       | A1        | Manual       | Price List 01 |            |       |          |
| 4 | RH5006   | Hops - Cascade        | 50       | lb       | A1        | Manual       | Price List 01 |            |       |          |
| 5 |          |                       |          | BBL      |           |              | Price List 01 |            |       |          |

## Details / How-To

1. Select the wort item that you want to define production procedures for



Now your Procedure steps will show on the Brew Sheet when a production order for that item is selected!



**Brew Sheet**

Wort: Green Beer Brew Progress Chart Location: Brewery #1 Start Date: 12/14/14 End Date: 12/26/14 Refresh Matrix User: Status: Released

**Production**

Express Issue Receipt Close

**PdO Selector**

| S | Tank | Prod # | Item Code | Brand | Batch  | NPN | Prod. Date | Prod. Time | Plan Qty | ISSUED | RECEIPT |
|---|------|--------|-----------|-------|--------|-----|------------|------------|----------|--------|---------|
| R | BH41 | 10196  | W1001     | AMA   | AMA122 | 13  | 12/14/14   | 10:00AM    | 100.00   |        |         |
| R | BH41 | 10199  | W1001     | AMA   | AMA122 | 13  | 12/14/14   | 10:00AM    | 100.00   |        |         |
| R | BH41 | 10200  | W1001     | AMA   | AMA122 | 13  | 12/14/14   | 10:00AM    | 100.00   |        |         |
| R | BH41 | 10201  | W1001     | AMA   | AMA122 | 13  | 12/14/14   | 10:00AM    | 100.00   |        |         |
| R | BH41 | 10202  | W1001     | AMA   | AMA122 | 13  | 12/14/14   | 10:00AM    | 100.00   |        |         |
| R | BH41 | 10203  | W1001     | AMA   | AMA122 | 13  | 12/14/14   | 10:00AM    | 100.00   |        |         |
| R | BH41 | 10208  | W1003     | JPA   |        | 0   | 12/14/14   | 3:45PM     | 30.00    |        |         |
| R | BH41 | 10209  | W1003     | JPA   |        | 0   | 12/14/14   | 3:45PM     | 30.00    |        |         |

**Status**

QC Data: Brew QC Micro QC

**Recipe**

Adjust

**Timing**

Adjust

Cancel

**Yeast**

Yeast ID: Yeast Crop: Yeast Qty: 0

Yeast Tank: Yeast Gen:

**PdO Line Details**

| Item Code | Plan Qty | Unit | Item Name             | Type     | Prod Unit | Prod Qty |
|-----------|----------|------|-----------------------|----------|-----------|----------|
| RM5005    | 1,000.00 | lb   | Malt 2-Row Bulk       | RM: Malt | lb        | 1,000.00 |
| RM5028    | 200.00   | lb   | Maria Otter supersack | RM: Malt | lb        | 800.00   |
| RM5014    | 100.00   | lb   | Malt C-45             | RM: Malt | lb        | 200.00   |
| RH5006    | 50.00    | lb   | Hops - Cascade        | RM: Hops | lb        | 50.00    |

**Production Procedure**

| Step Name  | Length | Description         |
|------------|--------|---------------------|
| Start Boil | 5      | Start Boil Temp 105 |
| Step 2     | 45     | Step 2              |

Version 4.5.1.0