



How To Import Queries Into Orchestrated

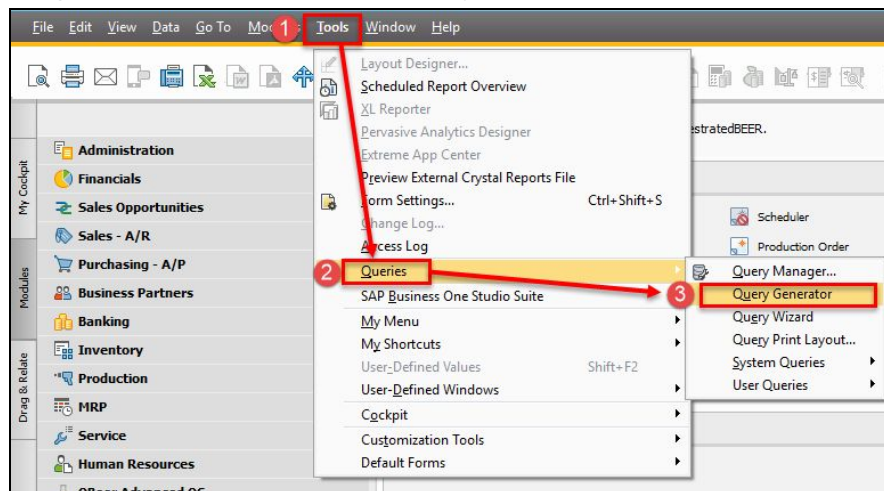
Summary

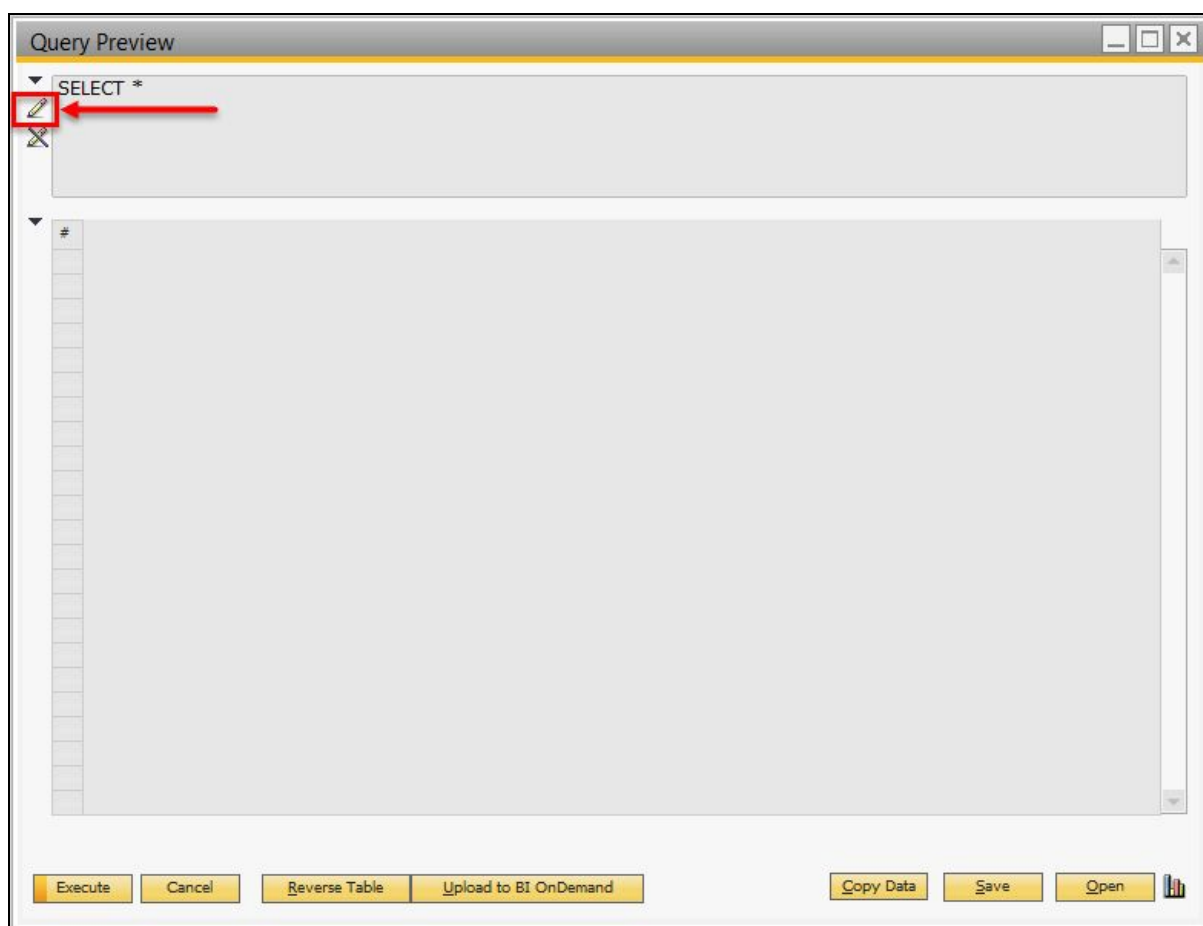
Ever find a query that you really like, or ask for help and see a query posting online? Here's how you can 'import' it into Orchestrated and see it now and save it for future use.

Here's a short video (~3 mins) to help get you started:

Details / How-To

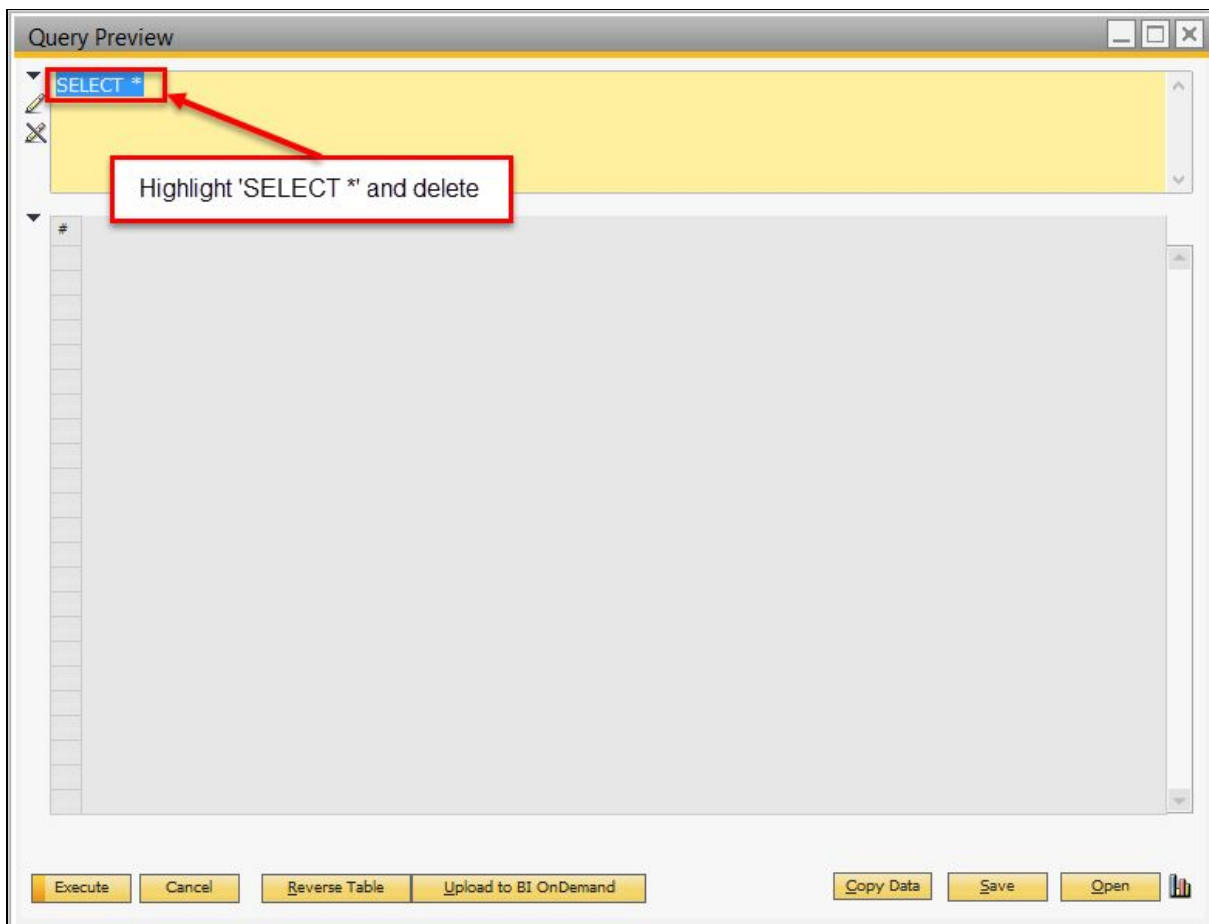
1. Navigate to Tools → Queries → Query Generator







4. Now highlight the 'SELECT *' and delete it.





5. Now paste in the query you wish to see and press  to view the results





Query Preview

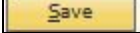
T1.[U_ORC_BE_PkgPall_Qty]
FROM OITM T0
INNER JOIN [dbo].[@ORC_BE_
WHERE T0.[U_ORC_BE_ProcessT

1 PASTE QUERY HERE

#	Item No.	Item Description	Pack Type	U_ORC_BE_PkgPall_Qty
1	1001-B212	Amber Ale - Case 2/12/12 Btl	B21212	36
2	1001-B46	Amber Ale - Case 4/6/12 Btl	B4612	70
3	1001-K12	Amber Ale - Keg 1/2 BBL	K12	8
4	1001-K16	Amber Ale - Keg 1/6 BBL	K16	16
5	1001-KF	Amber Ale - Firkin	KF	36
6	1002-B46	Pale Ale - Case 4/6/12 Btl	B4612	70
7	1002-K12	Pale Ale - Keg 1/2 BBL	K12	8
8	1002-K16	Pale Ale - Keg 1/6 BBL	K16	16
9	1002-KF	Pale Ale - Firkin	KF	36
10	1003-B46	IPA - Case 4/6/12 Btl	B4612	70
11	1003-K12			
12	1003-K16			
13	1003-KF			
14	1004-B212			
15	1004-B46	Stout - Case 4/6/12 Btl	B4612	70
16	1004-K12	Stout - Keg 1/2 BBL	K12	8
17	1004-K16	Stout - Keg 1/6 BBL	K16	16
18	1004-KF	Stout - Firkin	KF	36
19	1005-B122	Portlandia Porter - Case 12/22 Btl	B1222	36
20	1005-B46	Portlandia Porter - Case 4/6/12 Btl	B4612	70
21	1005-K12	Portlandia Porter - Keg 1/2 BBL	K12	8
22	1005-K16	Portlandia Porter - Keg 1/6 BBL	K16	16

2 Then press here to see results

6. You can now save that query for future use by pressing the  button, navigating to a category you wish to put it in and saving.

Version 4.5.1.0